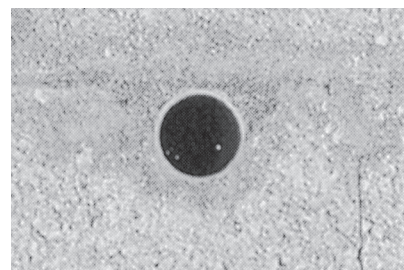
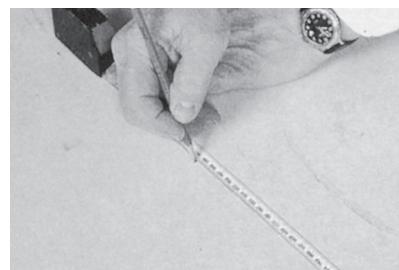


MA3051 Acoustic Wall Ventilator Installation Instructions



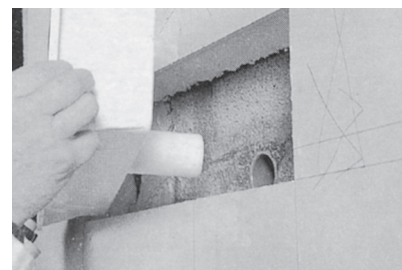
1. After core drilling wall place sleeve in opening and clip-fit external grille.



2. Locate position of sleeve internally and apply template of required size.



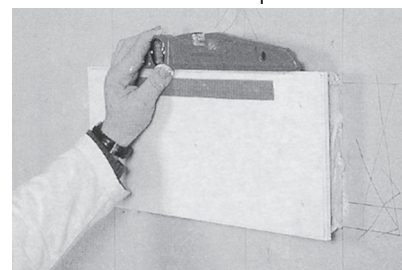
3. Cut out internal lining to required dimension.



4. Ensure ventilator body and male coupling is in alignment.



5. Apply bonding compound to aperture surround.



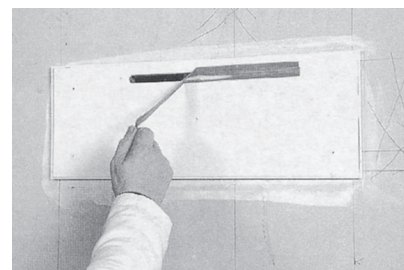
6. Position ventilator in aperture



7. Drive home the ventilator.



8. Make good the surround.



9. Remove protective strip after decoration is complete.

